



# 3-JAW CHUCK POLISHING MACHINE

**H11-S4**

**H11-S5**

**H11-S6**



Pintai Machinery is a specialized manufacturer of high precision small grinders. In addition, we can design and manufacture various grinders according to customer's requirements. Currently we offer a series of equipment applicable for front process in tungsten carbide tool production, including tungsten carbide step-tool grinders, NC fully automatic chamfering machine, NC fully automatic carbide tool cutting machine, internal grinders, external grinders, polishing machines and cutting machines...etc.

# 3-JAW CHUCK POLISHING MACHINE

## H11-S

SIMPLIFIED STRUCTURE  
EASY OPERATION



Model / Specification		Unit	H11-S4	H11-S5	H11-S6
Chuck Diameter		Inch	4"	5"	6"
Workpiece Clamping Capacity		mm	Ø1-Ø100	Ø1-Ø125	Ø1-Ø150
Chuck Spindle Speed		rpm	0-3600	0-3600	0-2000
Chuck Spindle Motor		HP	1	1	1
Machine Dimension (L*W*H)		mm	800*800*1100		
Packing Dimension (L*W*H)		mm	950*950*1400		
Net Weight (approx.)		kg	250	250	300
Gross Weight	Pallet	kg	300	300	350
	Create		440	440	490

### ► Standard Accessories

Safety stop foot pedal  
Working light  
Wrench for 3-jaw chuck

### ► Application

Inside and outside diameter polishing  
Screw mold inside polishing  
Micro parts polishing

## ▶ Machine Features



- Chuck rotation can be clockwise and counterclockwise direction.
- Interchangeable utilization of internal and external hard jaws.
- Gripping Force(kgf) : 4" = 1200  
5" = 1500  
6" = 2200
- The body of chuck is made of MEEHANITE. It is suitably used for high speed revolution and 3 times more durable than regular material.



- A centralized operation panel.
- Equipped with a variable speed regulation knob for chuck spindle.



- Chuck spindle is controlled through inverter (SHIHLIN ELECTRIC) to provide infinity speed.



- Safety stop:  
Once the foot pedal switch is treadled, the chuck spindle stops immediately.



- Handle safety device:  
Once the handle takes out, the machine stops.




**PINTAI MACHINERY CO., LTD.**


No.322, Lianchu Rd., Fengyuan Dist., Taichung, Taiwan 42082

Ver. 201802

+886-4-2537 0951

 [www.pintai-tw.com](http://www.pintai-tw.com)

+886-4-2539 1801

 [info@pintai-tw.com](mailto:info@pintai-tw.com)

**PINTAI**

# 三爪式拋光機

**H11-S4**

**H11-S5**

**H11-S6**



鑽鈦機械是一家專業生產小型研磨機，我們能夠根據客戶的需求開發出各種研磨機。目前提供鎢鋼刀具前製程一系列設備：NC全自動倒角機、NC全自動鎢鋼切斷機、鎢鋼段差研磨機、內徑研磨機、外徑研磨機、拋光機、切斷機...等

# 三爪式拋光機 H11-S

結構簡化 · 簡易操作



型號/規格		單位	H11-S4	H11-S5	H11-S6
三爪夾頭規格		in	4"	5"	6"
可夾持工件直徑		mm	Ø1-Ø100	Ø1-Ø125	Ø1-Ø150
夾頭主軸轉速		rpm	0-3600	0-3600	0-2000
主軸馬達		HP	1	1	1
機械尺寸(長*寬*高)		mm	800*800*1100		
裝箱尺寸(長*寬*高)		mm	950*950*1400		
淨重		kg	250	250	300
毛重	棧板裝	kg	300	300	350
	板條箱		440	440	490

## ▶ 標準配件

安全停止腳踏板  
工作燈  
三爪夾頭扳手

## ▶ 應用

內外徑拋光  
螺絲模具拋光  
微小徑拋光

## ▶ 機台特色



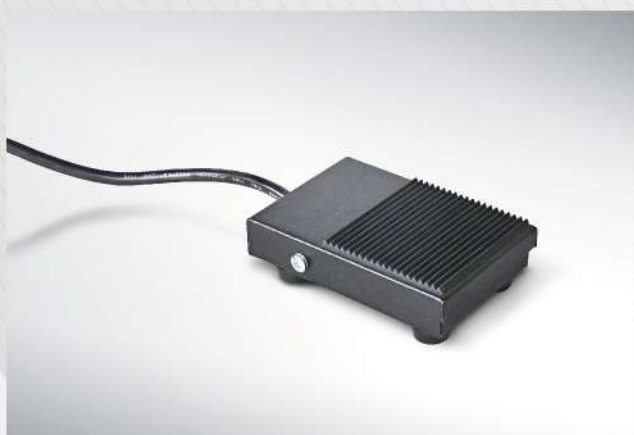
- 夾頭可正逆轉
- 夾爪可正爪與反爪
- 夾持力(kgf) : 4" = 1200  
5" = 1500  
6" = 2200
- 夾頭本體材質採米漢納鑄鐵·適用於高速迴轉；且具高於一般材質三倍之耐用性



- 集中式操控面板。
- 夾頭可無段變速調整。



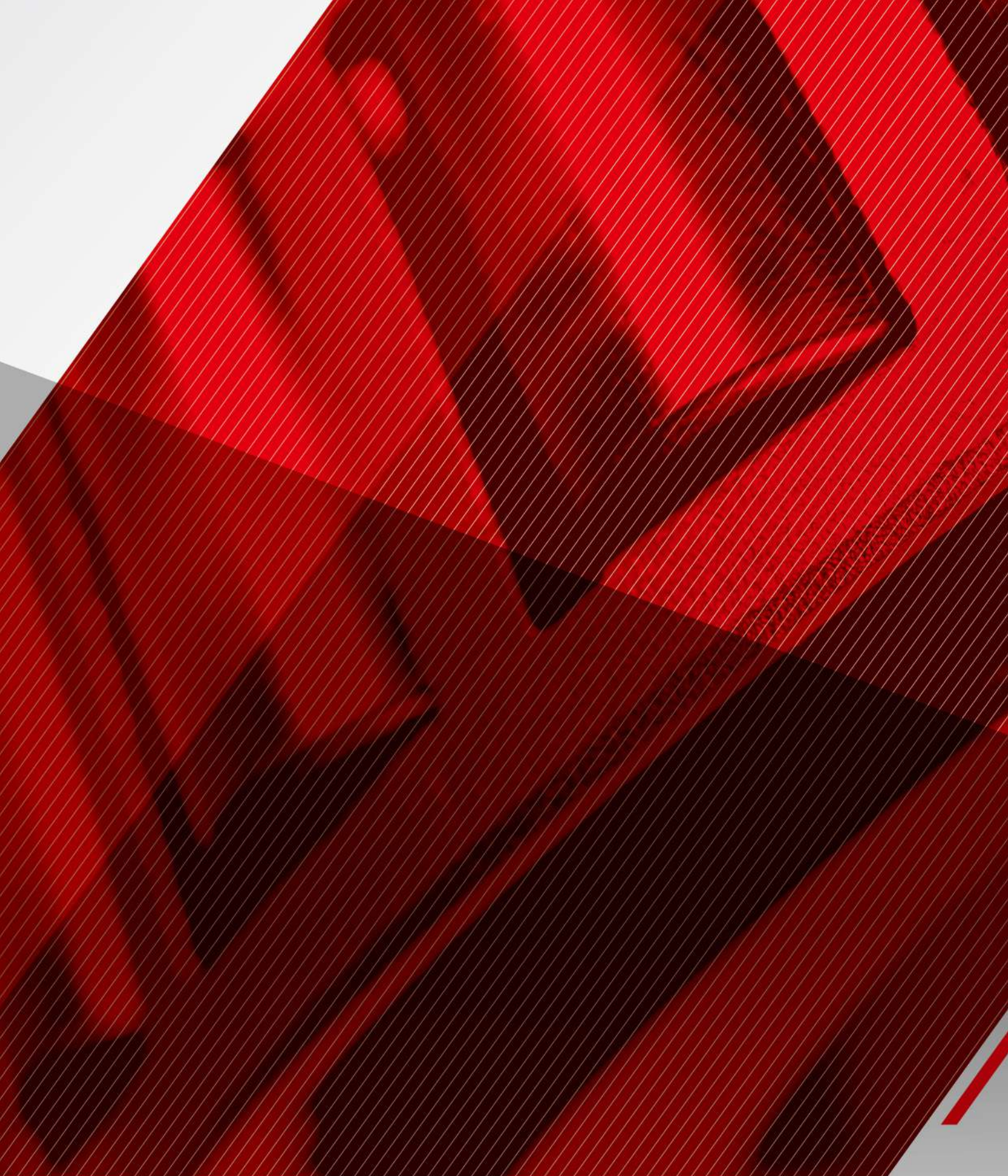
- 夾頭主軸轉速,採用變頻器控制(士林電機)。



- 踩下腳踏板·可立刻停止夾頭主軸運轉。



- 把手安全裝置：  
把手取出時·則機台無法操作。



Ver. 201802

**PINTAI**

鑽鈦機械有限公司  
420 台中市豐原區鎌村路322號

+886-4-2537 0951

www.pintai-tw.com

+886-4-2539 1801

info@pintai-tw.com